



NEUROHUB NEWSLETTER

MARCH 2025

Monthly Sessions

Buddies Play Den

First & last Saturday of the month we host an Under 10's play session at Buddies Den in Clay Cross.

Movement to Music

First Saturday of the month we host themed dance sessions with Sunflower Dance.

Chester's Den

Third Sunday of each month we host a play session at Chester's Den at the Football Club.

Killamarsh Play Session

First Sunday of each month we host a SEN play Session at Killamarsh Active Leisure Centre.



Upcoming Events

- Fashion Show:
Wednesday 2 April 2025
- Family Easter Activities:
Tuesday 15 April 2025

See upcoming events for further information.

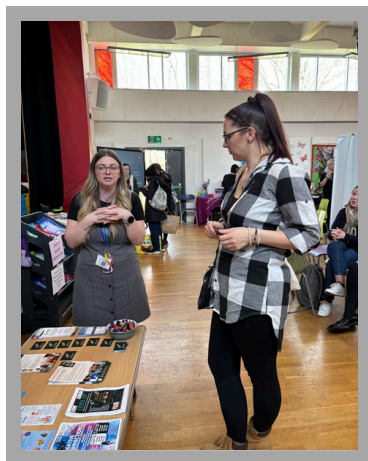
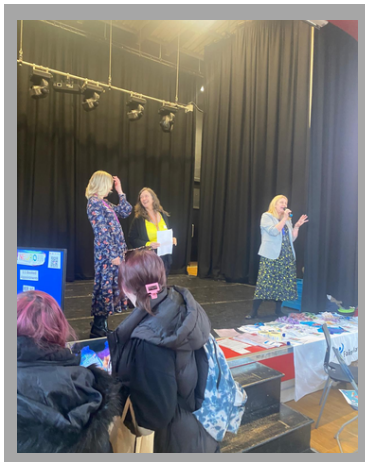




SESSIONS

**MARCH
2025**

Fairplay hosted a Neurodivergent Spring Summit on Wednesday 19 March 2025. It was a networking/pop-in day to link families and services for SEND support in Derbyshire. It was a great event!



The Movement to Music session at the start of the month was very busy. There were lots of witches and broomstick racing due to the Wicked theme. Come and join us for the April session!



01246 203963



neurohub@fair-play.co.uk



neurohub-derbyshire



neurohub_derbyshire



MONTHLY CALENDAR

MARCH 2025

THE NEUROHUB IS ON FACEBOOK AND INSTAGRAM. PLEASE FIND US AT



@NEUROHUB_DERBYSHIRE



@NEUROHUB-DERBYSHIRE

HAPPY Easter

April 2025



MON	TUE	WED	THU	FRI	SAT	SUN
	1	2 Fashion Show 6pm	3	4 Monkey Park Social Drop-In 10.30am-1.30pm	5 Clay Cross SEN Soft Play Session & Parent/Carer Support Group at Buddies Den 9am-10am Movement to Music 11am-12pm	6 Killamarsh SEN Soft Play Session & Parent/Carer Support Group 3pm-5pm
7	8 Creswell Parent/Carer Support Group 10am-12pm	9	10 Glapwell Parent/Carer Support Group 12.30pm-2.30pm	11 Monkey Park Social Drop-In 10.30am-1.30pm	12	13
14	15 Chesterfield Parent/Carer Support Group 10am-12pm	16	17	18 Bank Holiday Good Friday	19	20
21 Bank Holiday Easter Monday	22	23 Dronfield Parent/Carer Support Group 1pm-3pm	24 Matlock Parent/Carer Support Group 10am-12pm	25 Monkey Park Social Drop-In 10.30am-1.30pm	26 Clay Cross SEN Soft Play Session & Parent/Carer Support Group at Buddies Den 9am-10am	27 Happy Easter
28 	29	30 Level Up Home Educated 1.30pm-2.30pm 18-25 years 3pm-4pm 11-17 years 4.30pm-5.30pm				



01246 203963



neurohub@fair-play.co.uk



neurohub-derbyshire



neurohub_derbyshire



EVENT

**MARCH
2025**



FAMILY EASTER ACTIVITIES

ARTS & CRAFTS - ACTIVITIES - EGG HUNT

.....

TUESDAY 15TH APRIL 2025

.....

12.30PM-2.30PM

**£5 PER
FAMILY**

**FAIRPLAY CENTRE, ALEXANDRA ROAD WEST,
CHESTERFIELD, S40 1NP**

**PLEASE CALL THE OFFICE ON 01246 203963
TO BOOK YOUR PLACE!**





EVENTS

MARCH
2025



Upcoming Events 2025

NEW DATES & TIMES

Fairplay **NEUROHUB**
NEURODIVERGENCE THRIVES HERE

LEVEL UP

SEND sessions - come to socialise, play some board games and enjoy lovely food and drinks in the cafe!

Dates for 2025 sessions:

- 26th March
- 30th April
- 28th May
- 25th June
- 30th July
- 27th August
- 24th September
- 29th October
- 26th November
- 17th December

Home Educated 1:30pm-2:30pm

18-25 years 3pm-4pm

11-17 years 4:30pm-5:30pm

We just ask that a responsible person attends along with their child/young person to these sessions

BOARD & BEAN

Unit 1,
4 New Beetwell Street, Chesterfield,
S40 1QR
boardandbean.co.uk

For more information please contact the office on 01246 203963

Fairplay **NEUROHUB**
NEURODIVERGENCE THRIVES HERE

CREATIVE CONNECTIONS

NEURODIVERGENT CREATIVE ARTS SESSIONS

MUSIC, DANCE, DRAMA AND ART ACTIVITIES AIMED TO BUILD CONFIDENCE, SOCIALISE AND EXPRESS YOURSELVES!

DCAS SPRING BANK ROAD CHESTERFIELD S40 1NL

11 - 17 YEARS : 5:30PM - 7PM

18 - 25 YEARS : 5:30PM - 7PM

2ND MAY
6TH JUNE
4TH JULY

16TH MAY
20TH JUNE
18TH JULY

£5 PER PERSON

WE JUST ASK THAT A RESPONSIBLE PERSON ATTENDS ALONG WITH THEIR YOUNG PERSON - REFRESHMENTS WILL BE PROVIDED.



We have had the first Creative Connections sessions this month which have been fantastic! Lots of music, art work and games have been enjoyed and we are looking forward to this group properly getting going with 2 different age group sessions each month - starting in May!



01246 203963



neurohub@fair-play.co.uk



[neurohub-derbyshire](https://www.facebook.com/neurohub-derbyshire)



[neurohub_derbyshire](https://www.instagram.com/neurohub_derbyshire)



EVENTS

MARCH 2025



Upcoming Events 2025

Blue Sky Fashion Shows
For fund raising fashion shows and bargain clothes!

FASHION SHOW & SALE

To be held at: DCAS, Spring Bank Road, Chesterfield, S40 1NL
Please park in Mecca Bingo - parking fees apply, access through the Fairplay Driveway only
Date: **Wednesday 2 April 2025** Time: 6pm start
Contact: 01246 203963 Price: £3 per person, bring your own bottle/drink

NEXT • TOPSHOP • NEW LOOK • D.P RIVER ISLAND • K&D • BLUE CHAMELEON • MARKS & SPENCER •

Designer High Street Store & Top Range Ladies Garments to be sold at a Fraction of the Normal Price

LOCAL MODELS
ALL WELCOME
NO OBLIGATION TO BUY

ALL ITEMS FULLY GUARANTEED
GOODS SOLD ON DAY OF SHOW ARE SUBJECT TO AVAILABILITY
STYLES TO SUIT ALL AGES - SIZES 8-22
UNBEATABLE PRICES

SPRING | SUMMER | AUTUMN | WINTER
WWW.BLUESKYFASHIONSHOWS.CO.UK

NEUROHUB NEURODIVERGENCE THRIVES HERE

Fairplay

GLAPWELL PARENT/CARER SUPPORT GROUP
For parents/carers of children with additional needs (no diagnosis needed)

Coffee, cake & a chat!

A chance to talk to peers who understand

Advice, guidance & signposting

A safe space to get quality support

Join Us
12.30pm - 2.30pm:
10th April, 8th May, 12th June, 10th July, 14th Aug, 11th Sept, 9th Oct, 13th Nov, 11th Dec.

Glapwell Centre,
The Grn, Glapwell, Chesterfield
S44 5LW

Please contact the Glapwell Centre for more details or queries on gpcmanager@outlook.com or call 01623 810979

NEUROHUB NEURODIVERGENCE THRIVES HERE

Fairplay

PARENT AND CARER SUPPORT GROUP

A support group for parents and carers for children with additional needs

Advice

Peer Support

Guidance

Signposting

Coffee

Cake

Join us 10am-12pm once a month
(14th January, 11th February, 11th March, 15th April, 13th May, 10th June, 15th July, 12th August, 9th September, 14th October, 11th November & 9th December)

FAIRPLAY CENTRE,
ALEXANDRA ROAD WEST,
CHESTERFIELD,
S40 1NP
Please park in the pay & display car park in Mecca Bingo

NEUROHUB NEURODIVERGENCE THRIVES HERE

Fairplay

PARENT/CARER SUPPORT GROUP CRESWELL
FOR PARENTS/CARERS OF CHILDREN WITH ADDITIONAL NEEDS

ADVICE, PEER SUPPORT, GUIDANCE, SIGNPOSTING

FIND OUT MORE ABOUT SERVICES FOR SUPPORT

COFFEE, CAKE & CHAT

JOIN US:
7th JAN 10AM-12PM
4th FEB 10AM-12PM
4th MARCH 10AM-12PM
8th APRIL 10AM-12PM
6th MAY 10AM-12PM
3rd JUNE 10AM-12PM

CRESWELL CHILDREN'S CENTRE,
GYPSEY LANE, CRESWELL,
WORKSOP, S80 4HY

NEUROHUB NEURODIVERGENCE THRIVES HERE

Fairplay

MATLOCK PARENT/CARER SUPPORT GROUP

Join us for coffee, cake & a chat!

A chance to talk to peers who understand

For parents & carers of children with additional needs

A safe space to get quality support

Advice, guidance & signposting

Join us on:
Thurs 23rd Jan 2025 - 10am-12pm
Thurs 20th Feb 2025 - 10am-12pm
Thurs 27th March 2025 - 10am-12pm
Thurs 24th April 2025 - 10am-12pm
Thurs 29th May 2025 - 10am-12pm
Thurs 26th June 2025 - 10am-12pm

Greenaway Wellbeing Hub
Old School Close
Matlock
Derbyshire
DE4 2PT

NEUROHUB NEURODIVERGENCE THRIVES HERE

Fairplay

DRONFIELD PARENT AND CARER SUPPORT GROUP

Dronfield Peel Centre, High Street, Dronfield, S18 1PX
(Free parking at the Civic Centre or Sainsbury's on Wreakes Lane)

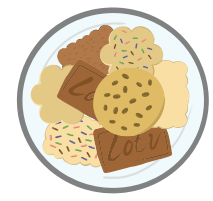
Join us on:
Wednesday 15th January 2025 - 6.30pm-8.30pm
Wednesday 26th February 2025 - 1pm-3pm
Wednesday 19th March 2025 - 6.30pm-8.30pm
Wednesday 23rd April 2025 - 1pm-3pm
Wednesday 21st May 2025 - 6.30pm-8.30pm
Wednesday 18th June 2025 - 1pm-3pm

Join us for coffee, cake & a chat!

A chance to talk to peers who understand

For parents & carers of children with additional needs

A safe space to get quality support





EVENTS

MARCH 2025



Upcoming Events 2025

NEUROHUB NEURODIVERGENCE THRIVES HERE

Fairplay

CLAY CROSS

SEN SOFT PLAY SESSION & PARENT/CARER SUPPORT GROUP

A CHANCE FOR CHILDREN/YOUNG PEOPLE TO SOCIALISE & PLAY

1ST & LAST SATURDAY OF EACH MONTH! 9AM-10AM

A CHANCE TO CHAT WITH OTHER PARENT/CARERS OF CHILDREN WITH ADDITIONAL NEEDS

ADVICE, PEER SUPPORT, GUIDANCE, SIGNPOSTING

COFFEE, CAKE & CHAT

FIND OUT MORE ABOUT SERVICES FOR SUPPORT

A SAFE SPACE TO GET QUALITY SUPPORT

FAMILY SESSION! £2 PER CHILD

Buddie's Play Den

BUDDIE'S PLAY DEN, BRIDGE STREET, CLAY CROSS, S45 9PD

NEUROHUB NEURODIVERGENCE THRIVES HERE

Fairplay

KILLAMARSH

SEN SOFT PLAY SESSION & PARENT/CARER SUPPORT GROUP

A CHANCE FOR CHILDREN/YOUNG PEOPLE TO SOCIALISE & PLAY

1ST SUNDAY OF EACH MONTH! 3PM-5PM

A CHANCE TO CHAT WITH OTHER PARENT/CARERS OF CHILDREN WITH ADDITIONAL NEEDS

ADVICE, PEER SUPPORT, GUIDANCE, SIGNPOSTING

COFFEE, CAKE & CHAT

FIND OUT MORE ABOUT SERVICES FOR SUPPORT

A SAFE SPACE TO GET QUALITY SUPPORT

FAMILY SESSION!

KILLAMARSH ACTIVE, STANLEY STREET, KILLAMARSH, SHEFFIELD, S21 1EL

Fairplay

UNDER 8'S FAMILY SESSION

Next Sessions: Saturday:

17.05.2025
21.06.2025
19.07.2025

Fairplay Centre, Alexandra Road West, Chesterfield, S40 1NP

1.30pm - 2.30pm

£2.50 per child

Come and join us for a Sensory Learning Session for you and your child.

Sensory Activities, 2 Sensory Rooms, Games, Outside Area for you to enjoy together and make friendships with other parents.

Refreshments available for a small donation.

For more information please contact the Fairplay Office on 01246 203963.

NEUROHUB NEURODIVERGENCE THRIVES HERE

Joined Up Care Derbyshire

MONKEY PARK BRINGING OUR COMMUNITY TOGETHER

MONKEY PARK SOCIAL DROP-IN

Fridays 10.30am-1.30pm

Monkey Park Community Hub, 128a Chester Street, Chesterfield, S40 1DN

Free Session

Come find out more about upcoming events/workshops/social groups & parent/carer support groups.

Come meet others at our social session!

- Make communication aids/resources
- Art & Craft activities
- Board Games
- Refreshments

• Neuro Hub Advisor will be available for general info & advice

If you would like a 1:1 appointment for advice & support, please contact the NeuroHub on neurohub@fair-play.co.uk so we can arrange this for you.

For more information please contact the Fairplay Office on 01246 203963.

NEUROHUB NEURODIVERGENCE THRIVES HERE

Fairplay

DCAS Spring Bank Road Chesterfield S40 1NL

£5 pp

Sunflower Dance

DANCE FUN FOR ALL

MOVEMENT TO MUSIC

SEND dance sessions! (5-15 years)

Fun, relaxed dance group! Come and make some new friends and have a good dance!

Chance for parents/carers to have a coffee and chat whilst your children are having fun!

Next sessions:

- 4th January
- 1st February
- 1st March
- 5th April
- 3rd May
- 7th June
- 5th July
- 2nd August
- 6th September
- 4th October
- 1st November
- 6th December
- all 11am-12pm

Contact Fairplay for more information: 01246 203963

Joined Up Care Derbyshire

NEUROHUB NEURODIVERGENCE THRIVES HERE

CHESTER DEN Fairplay

Chester's Den and Fairplay will be opening exclusive Neurodiverse sessions in 2025

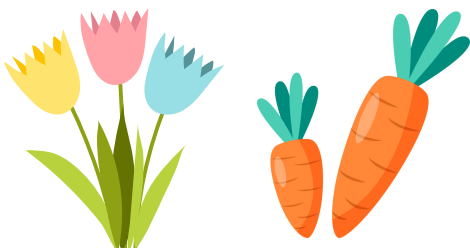
SUNDAYS | 8:30AM - 9:30AM

19 JAN	16 FEB	16 MAR	13 APR	18 MAY	22 JUNE
20 JUL	17 AUG	21 SEP	19 OCT	16 NOV	21 DEC

All children and families are welcome where they will benefit from this session.

Children up to age 12 can use the play equipment and those over age 12 can use the art and access art/crafts.

Closed due to Bank Holiday



HAPPY Easter



01246 203963



neurohub@fair-play.co.uk



neurohub-derbyshire



neurohub_derbyshire