

Snax & Chatz

Social groups
for adults with a
learning disability

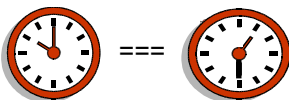


Amber Valley
Alliance for
Learning
Disabilities
(AVALD)

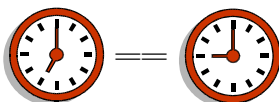
Registered Charity
No. 1101422

Snax & Chatz is a
social group for adults
with a learning disability
aged 18 and over

The group meets most
Mondays and Thursdays



Monday 10.00am to 1.30pm



Thursday 7pm to 9pm



At Ripley Methodist Church
21 Wood St
Ripley DE5 3DD



Tel: 01773
747979 or
07503 048505
For information

42

email: ambervalleyalliance@gmail.com



Amber Valley Alliance for Learning Disabilities (AVALD) assists and supports people with a learning disability to organise and develop their own recreational, social and leisure activities and opportunities.

Snax & Chatz

Activities include:



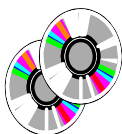
Entertainment



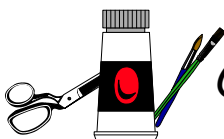
Games

B	I	N	G	O
46	57	45	39	56
1	12	10	71	15
27	48	13	21	
51	6	4	63	18
49	24	74	34	2

Bingo Sessions



Discos



Crafts



Dancing
Classes

Ballroom Street



Exercise Classes



Outings

AVALD aims to work with other charities, statutory bodies and voluntary organisations to improve the quality of life for people with a learning disability, their families and carers by providing help, support and information.

All the Officers, Trustees and Volunteers of AVALD who are involved in the support of members and the organisation of its activities will be checked by the Disclosure And Baring Service (DBS) if required.

Amber Valley Alliance for Learning Disabilities and the Snax & Chatz Social Groups are run by a team of volunteers together with the members with a learning disability.

There are no paid staff.

Fund raising is done by the sale of crafts, bric-a-brac, new and used items, tombolas, personal sponsorship, support from businesses and local organisations, grant applications, etc. Help with fund raising is always very much appreciated.

Chairman - Avril Ashworth

Treasurer - Jane Brearley

Secretary - Peter Ashworth

**Telephone 01773
747979 for information**